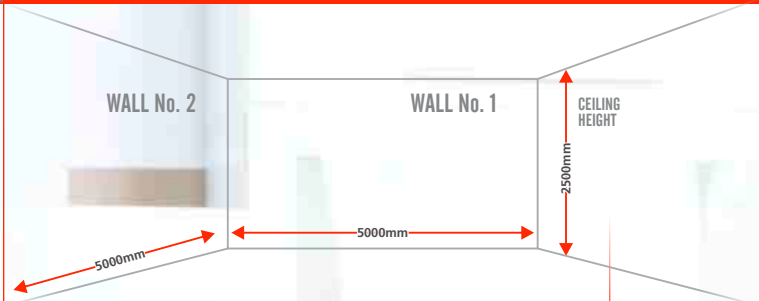


A complete guide to  
planning and designing  
your dream kitchen



# OUR DESIGN PROCESS



  
**swick**  
SOLID • WOOD • KITCHENS



# The SWICK Kitchen Design Process



## STEP 1 It is of the utmost importance to visit our showroom to inspect our Solid Maple Wood Cupboards and accessories.

Without actually physically seeing and touching our solid Maple wood cabinets for kitchens, one will not really be able to pay justice in assessing our solid wood products, our beautiful designs and the detail of our quotation ... nowhere to be found elsewhere in the RSA. So, as a very 1st step, please visit us at our showrooms, and (if possible) bring your kitchen's measures with you (see our easy three step guide-lines) ... **after your visit to us, we will certainly soon then also pay you a visit at your place to make sure all your wishes and all aspects have been dealt with.**

## STEP 2 Provide us with your Project Information

### Room Layout:

If possible, please measure the walls of your existing or planned kitchen, and tell us where the doors and windows are. For your convenience, please use our friendly kitchen planner step-by-step guide that will help you with measuring your kitchen.

### Appliances Specification:

If possible, please provide us with your appliances measurements and specifications, so our designers will be able to consider these in your design

### Special Requirements and features:

Please provide us with any special requirement, special feature or any concern, so we can address it properly during design process

### Contact Information:

Provide us with your contact information (name, email address and preferably phone number), so we may contact you to discuss your project and work with you on it.

## STEP 3 Our Professional Kitchen Designers

Our friendly, professional designers will design your exciting kitchen based on your specifications and expectations. Within 24 working hours you will receive our proposed design and detailed quote.

## STEP 4 Review your Design and Budget

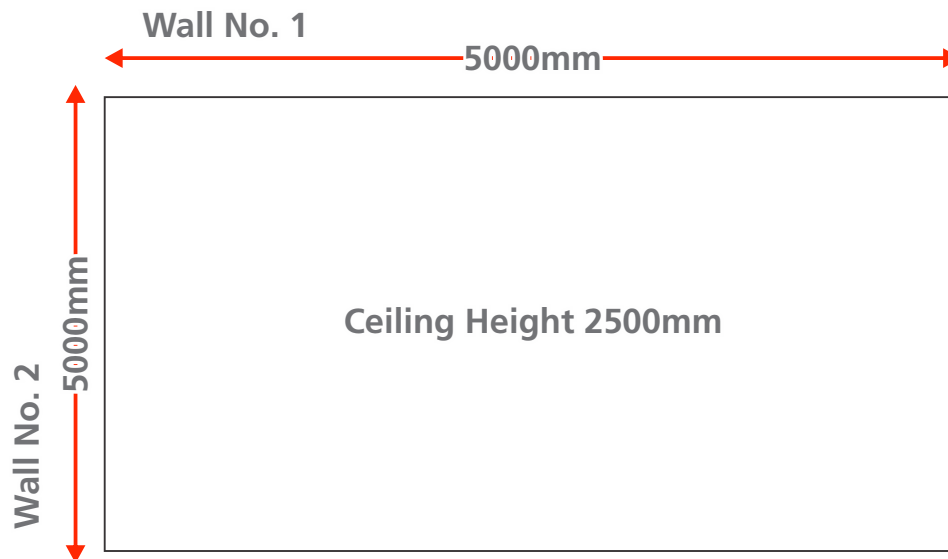
View your design, in sizzling, colourful 3D. This will immediately enable you to do "value engineering" (adapting it by adding or eliminating elements to suit your needs and preferences as well as available budget) until you are completely satisfied! When you see your future kitchen, in realistic 3D colour impression, you can eliminate the guesswork. You will also be able to have our designers revise your kitchen design until you are happy.

## STEP 5 Finalise your kitchen's installation with SWICK

# The SWICK Kitchen Measuring Guidelines



## Step 1: Measure all the walls and ceiling.



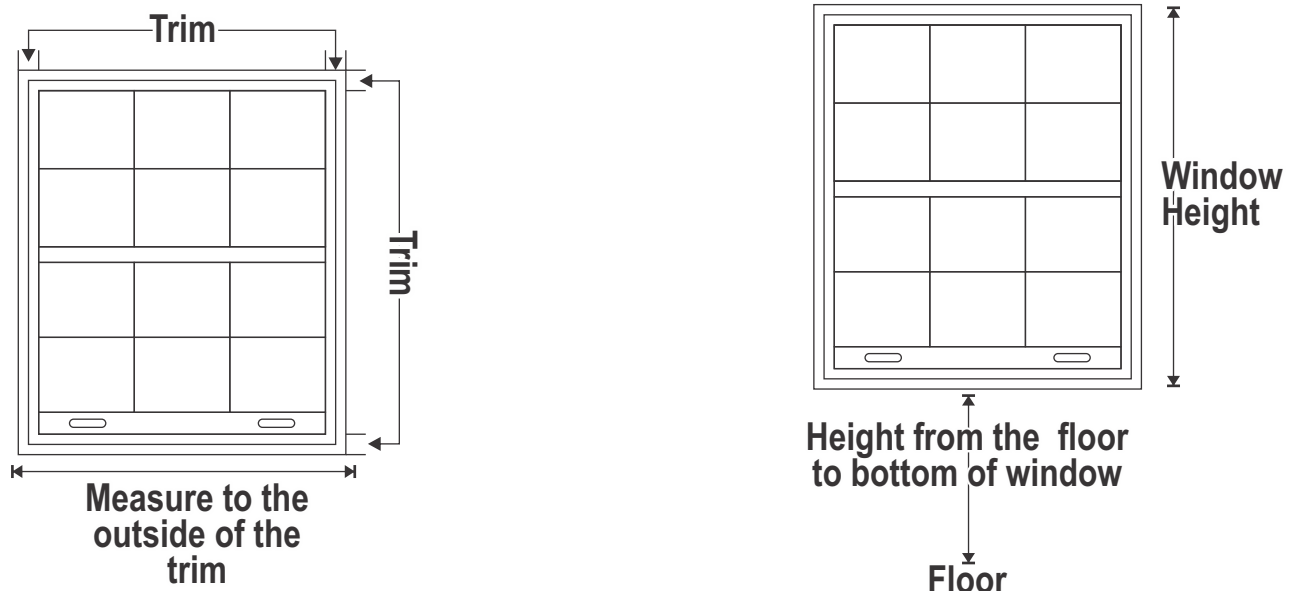
If your drawing does not match the above drawing, don't worry. Not all kitchen configurations are the same. As long as you have walls drawn that match your kitchen configuration, you are on your way.

## Step 2: Measuring Windows and Doors

The **next step** will be to mark on your drawing all the openings in the kitchen, openings refer to all windows, doors, and wall cut outs.

The measurements needed are: the opening width, height, and distance from the wall, please specify the wall you are measuring from, and number the openings.

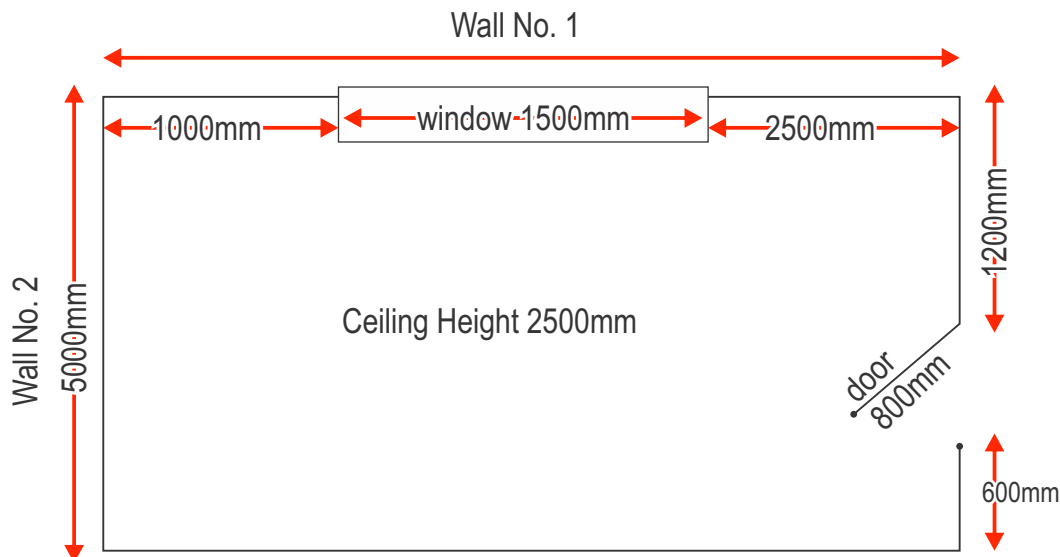
When measuring, make sure you measure from the outside trim of the window, like the following sample:



# The SWICK Kitchen Measuring Guidelines

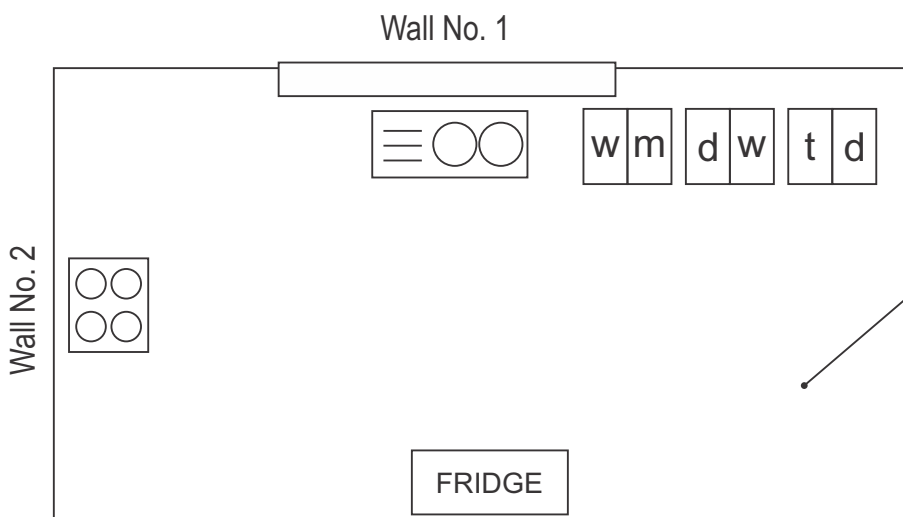


After marking the openings, your drawing should look something like this:



## Step 3: Indicating all desired appliances

The next step is to mark out where all your appliances are, along with measurements. Your drawing should now look something like this:



Your measurements:

### Fridge

Width \_\_\_\_\_  
Height \_\_\_\_\_

### Stove

Loose/Freestanding  Built-in  
Width \_\_\_\_\_

### Washing Machine

Front loader  Top Loader  
Width \_\_\_\_\_

Information & measurements of appliances.

SINK	HOB	WASHING MACHINE	DISH WASHER	TUMBLE DRYER	FRIDGE/FREEZER
Double Bowl 410mm	Full Gas Cooker Freestanding 700mm	600mm Top Loading	600mm Front Loading	600mm Front Loading	900mm 1780mm high

That's it, we are done with measuring. After completing the drawing and the list of your preferences, please visit us at SWICK to assist and finalize.

THE DESIGN PROCESS



(011) 392 2132

25 Sysie Road, Croyden, Kempton Park

[enquiries@swick.co.za](mailto:enquiries@swick.co.za)

[www.swick.co.za](http://www.swick.co.za)